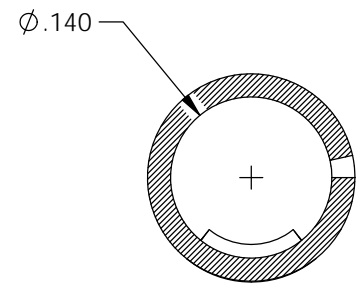
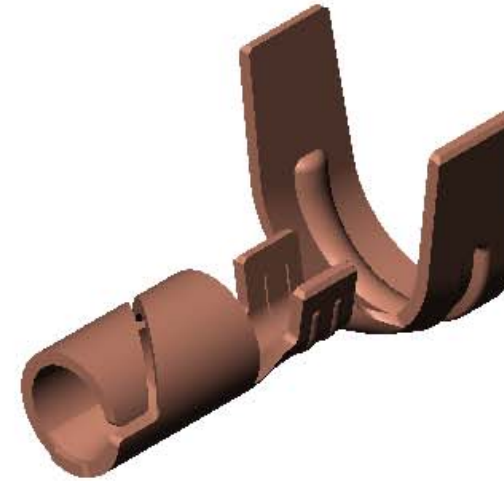
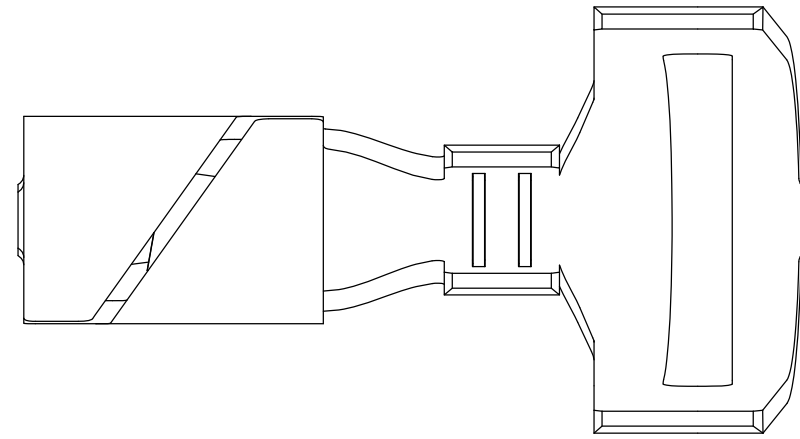


NOTES:

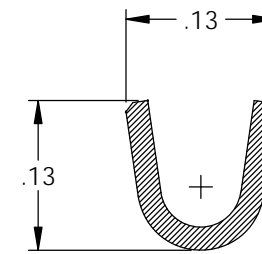
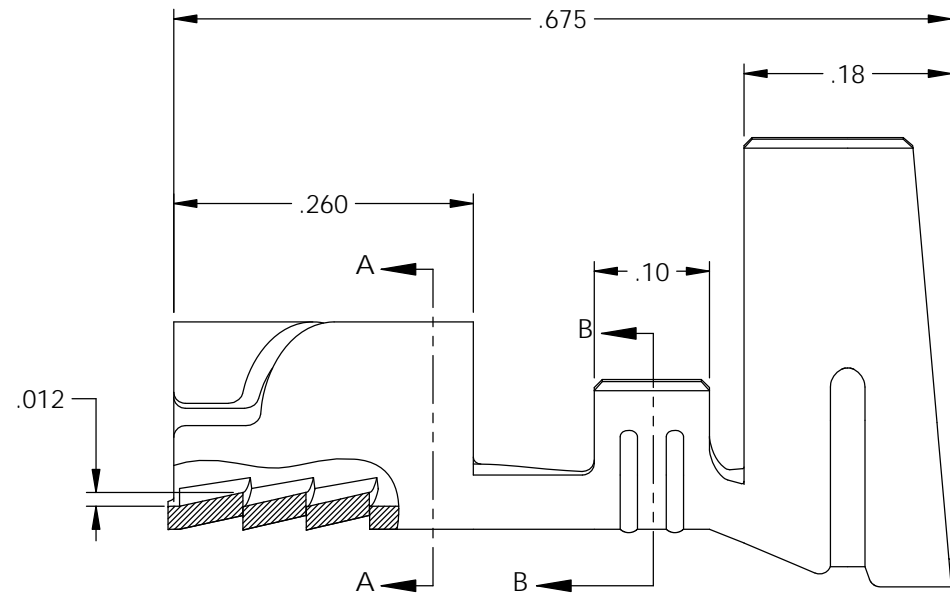
- MATERIAL: .020 THICK BRASS
#4 TEMPER (FULL HARD)
PER ETCO METAL CODE 0-0020.
- MATERIAL: .020 THICK BERYLLIUM COPPER
#2 TEMPER (1/2 HARD)
PER ETCO METAL CODE 0-0021.
- PARTS MAY BE COATED WITH A LIGHT FILM OF LUBRICATION USED IN THE MANUFACTURING PROCESS.
- WIRE RANGE: 7 mm STRANDED CABLE.

P/C	DESCRIPTION	MAT'L
10120	ST77-BE	NOTE 2
10121	ST77-HB	NOTE 1

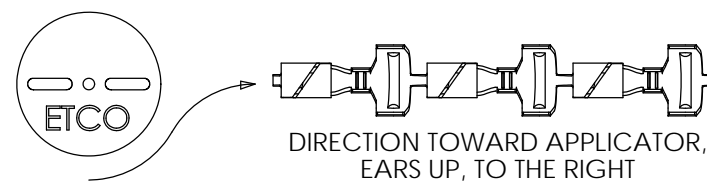
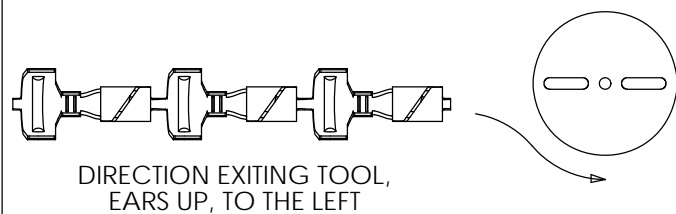
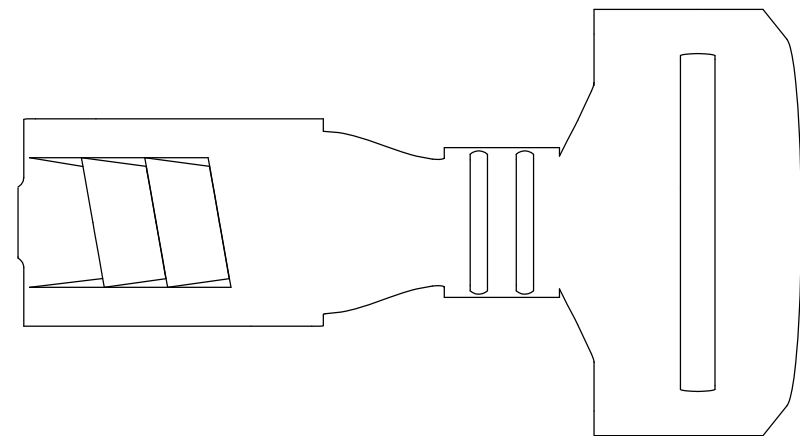
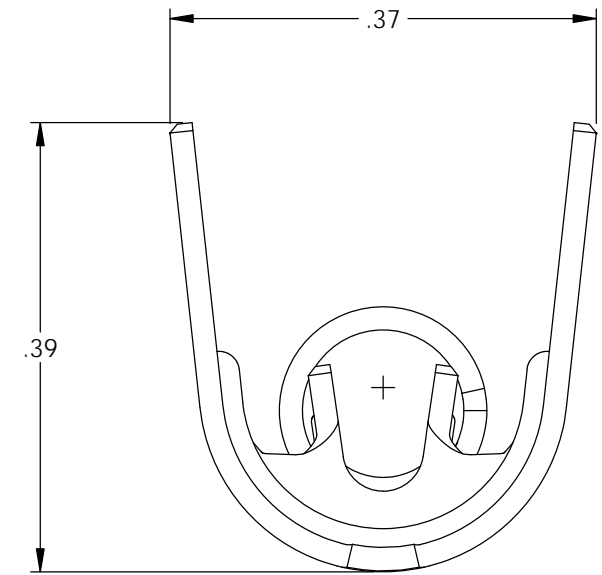
Rev.	Description of Change/ SCN#	Date
1	Redrawn in SW from ACAD, Org.Eng.Dwg.Date: 11/21/89	5/20/19



SECTION A-A



SECTION B-B



THIS PRINT IS THE PROPERTY OF ETCO INCORPORATED. NO PART OF THIS DESIGN MAY BE USED IN ANY WAY WITHOUT WRITTEN CONSENT FROM ETCO INCORPORATED.

UNCONTROLLED COPY

<p>THIRD ANGLE PROJECTION TOLERANCES UNLESS OTHERWISE SPECIFIED INCHES: .XX - ±.030 .XXX - ±.015 ANGLES: ±5°</p>	<p>TOOL NO. 2052</p>	<p>Title: Distributor Terminal</p>		
		<p>DO NOT SCALE DWG.</p>	<p>Drawn By: S.Johnson</p>	<p>Date: 5/20/19</p>
<p>ETCO Incorporated Engineered Products 25 Bellows Street Warwick, RI 02888 Phone: (401) 467-2400 Fax: (401) 467-9230 www.ETCO.com</p>		<p>Design Control By: ETCO</p>	<p>Scale: 6X</p>	<p>Size B</p>
		<p>Dwg. No.: ST77 cust</p>		