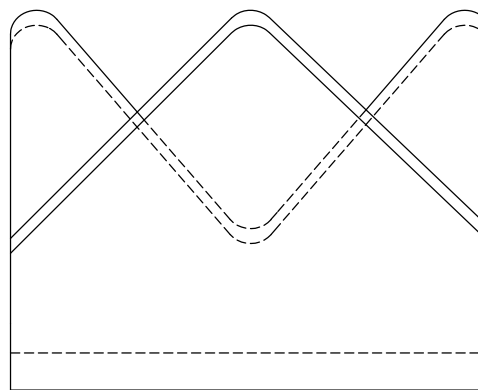
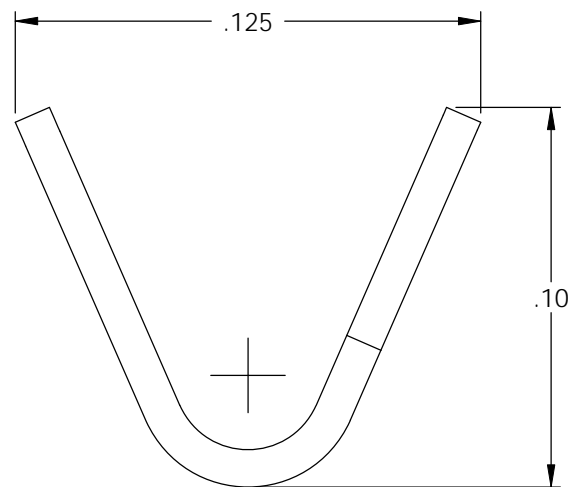
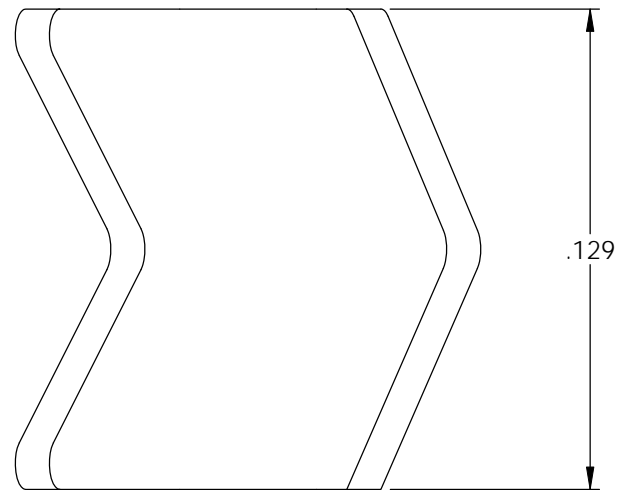
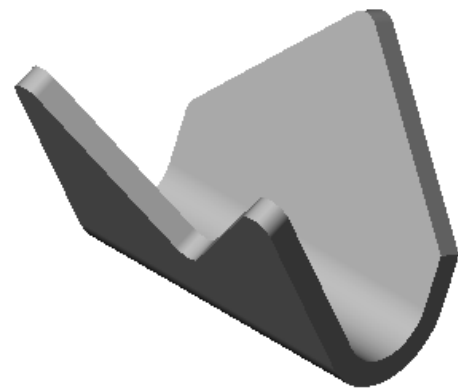
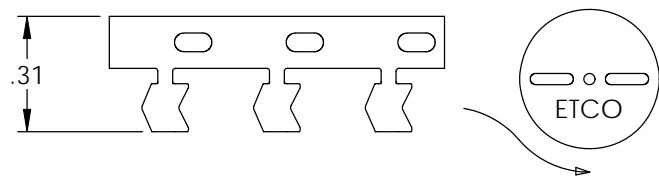


- NOTES:
 1.) MAT'L: .010 THICK BRASS
 #2 TEMPER (1/2 HARD)
 PER ETCO METAL CODE 00040.
 2.) MAT'L: .010 THICK PRETINNED BRASS
 #2 TEMPER (1/2 HARD)
 PER ETCO METAL CODE 01041.
 3.) PARTS MAY BE COATED WITH A LIGHT FILM OF
 LUBRICATION USED IN THE MANUFACTURING PROCESS.
 4.) CMA: 1000-1600.

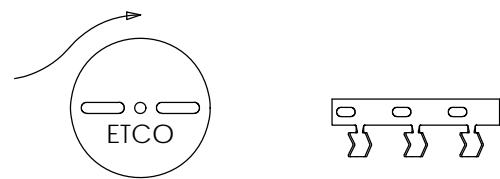


P/C	DESCRIPTION	MAT'L
09929	UBTA-THB	NOTE 2
09987	UBTA-HB	NOTE 1

Rev.	Description of Change/ SCN#	Date
1	REDRAWN ON SOLIDWORKS NO CHANGES SCJ ORG.ENG.DWG.DATE: 5-29-80	11-16-05



SCALE: 2X
 DIRECTION EXITING TOOL,
 EARS DOWN, CARRIER TO THE BACK



DIRECTION TOWARD APPLICATOR,
 EARS UP, CARRIER TO THE BACK

UNCONTROLLED COPY

 THIRD ANGLE PROJECTION TOLERANCES UNLESS OTHERWISE SPECIFIED INCHES: .XX - ±.030 .XXX - ±.015 ANGLES: ±5°	TOOL NO. 0676	Title: BANDING TIP		
		DO NOT SCALE DWG.	Drawn By: S.JOHNSON	Date: 11-16-06
ETCO Incorporated Engineered Products 25 Bellows Street Warwick, RI 02888 Phone: (401) 467-2400 Fax: (401) 467-9230 www.ETCO.com		Chk'd/App'd By:	Scale: 20X	Size B
		Dwg. No.: UBTA cust		