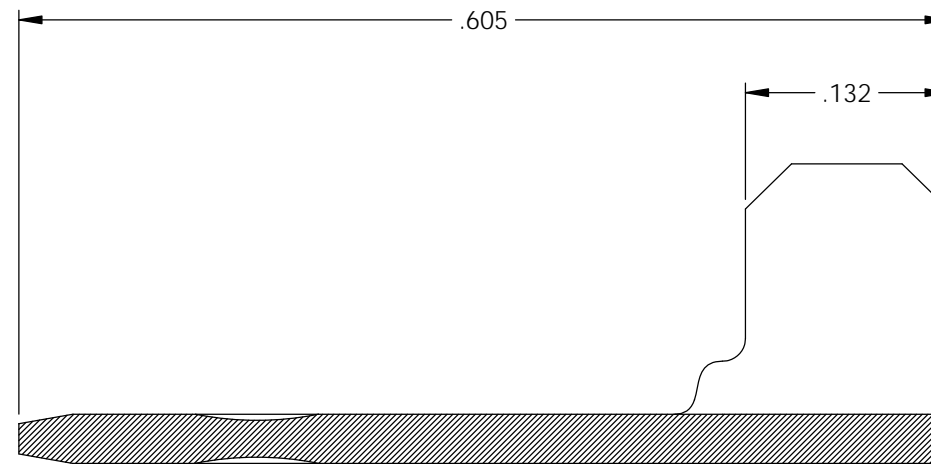
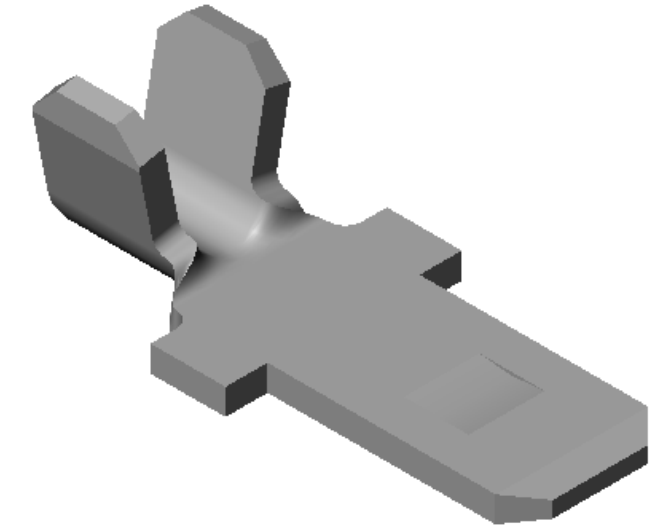
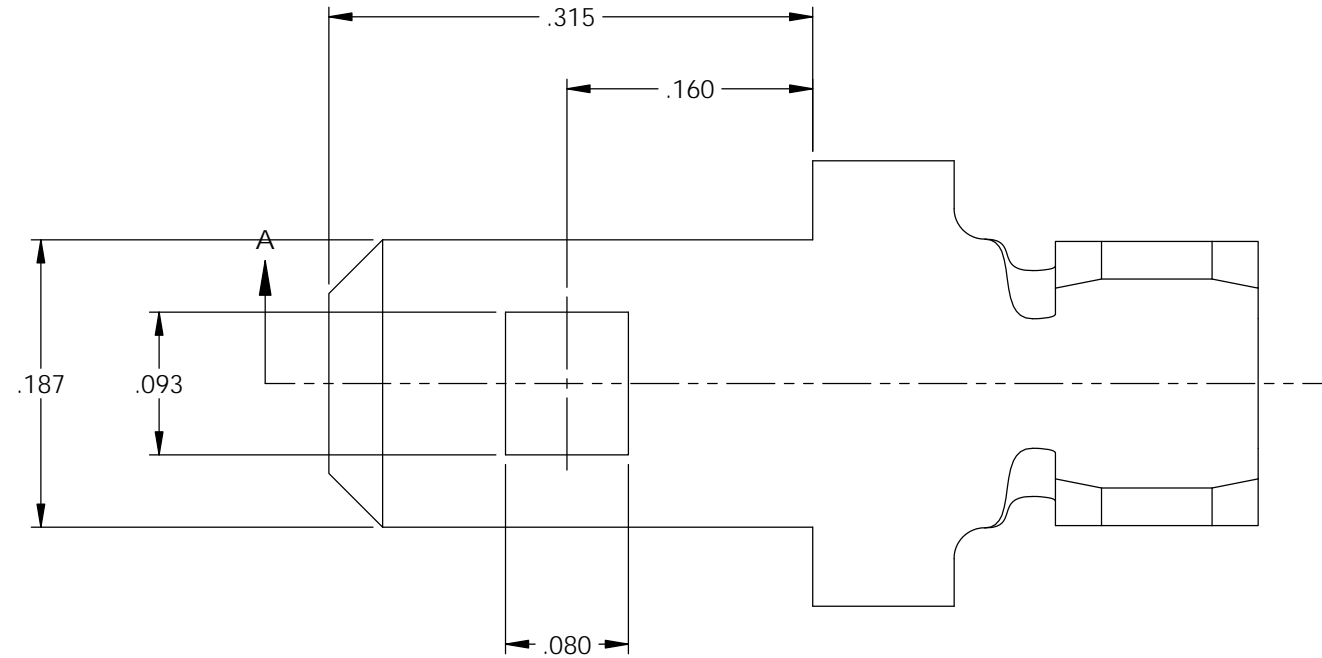


NOTES:

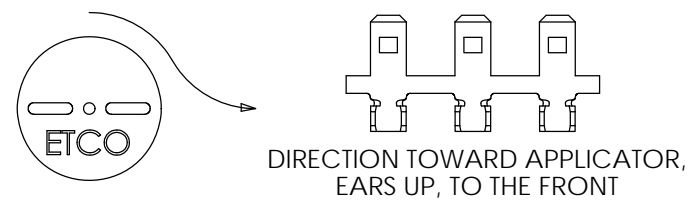
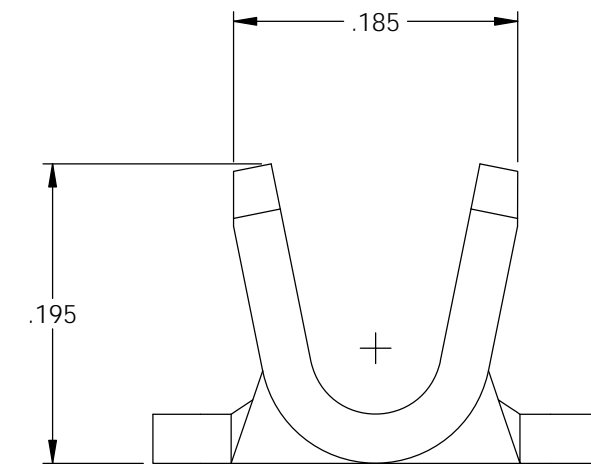
1. MATERIAL: .032 THICK PRE-TINNED STEEL,
#4 TEMPER (1/4 HARD)
PER ETCO METAL CODE 2-3062.
2. PARTS MAY BE COATED WITH A LIGHT FILM OF
LUBRICATION USED IN THE MANUFACTURING PROCESS.
3. WIRE RANGE: 14-18 AWG.

Part Number	Mat'l
X3500M 165JA	Note 1

Rev.	Description of Change/ SCN#	Date
-	Approved For Mfg SCJ	6/25/20



SECTION A-A



THIS PRINT IS THE PROPERTY OF ETCO INCORPORATED. NO PART OF THIS DESIGN MAY BE USED IN ANY WAY WITHOUT WRITTEN CONSENT FROM ETCO INCORPORATED.

UNCONTROLLED COPY

<p>THIRD ANGLE PROJECTION TOLERANCES UNLESS OTHERWISE SPECIFIED INCHES: .XX - ±.030 .XXX - ±.015 ANGLES: ±5°</p>	<p>TOOL NO. 1042</p>	<p>Title: .032 x .187 Male Disconnect</p>		
		<p>DO NOT SCALE DWG.</p>	<p>Drawn By: S.Johnson</p>	<p>Date: 03/16/20</p>
<p>ETCO Incorporated Engineered Products 25 Bellows Street Warwick, RI 02888 Phone: (401) 467-2400 Fax: (401) 467-9230 www.ETCO.com</p>		<p>Design Control By: ETCO</p>	<p>Scale: 8X</p>	<p>Size B</p>
		<p>Dwg. No.: X3500M 165 cust</p>		