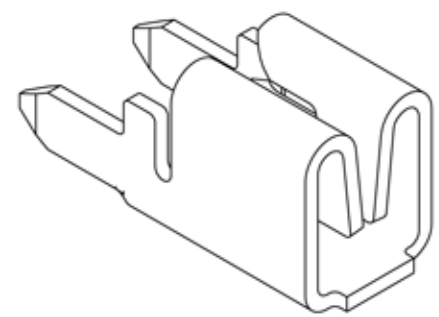
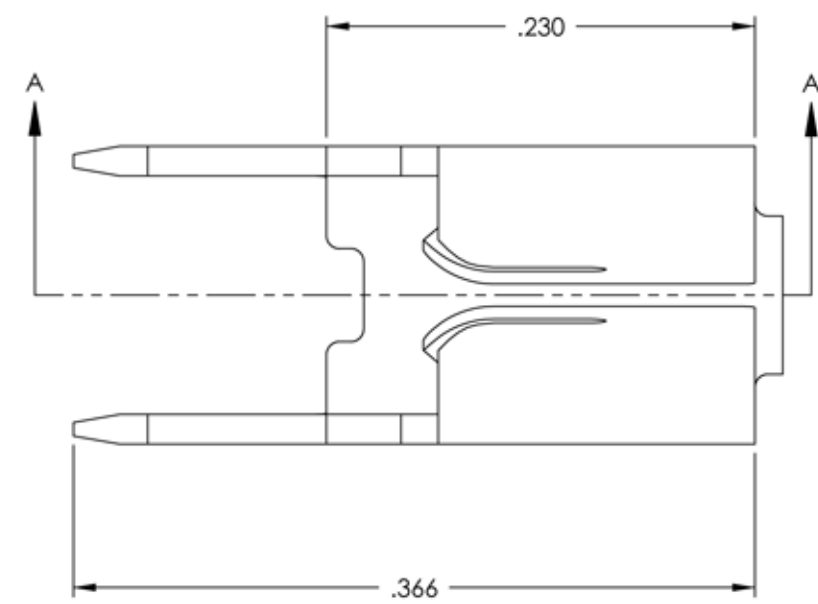


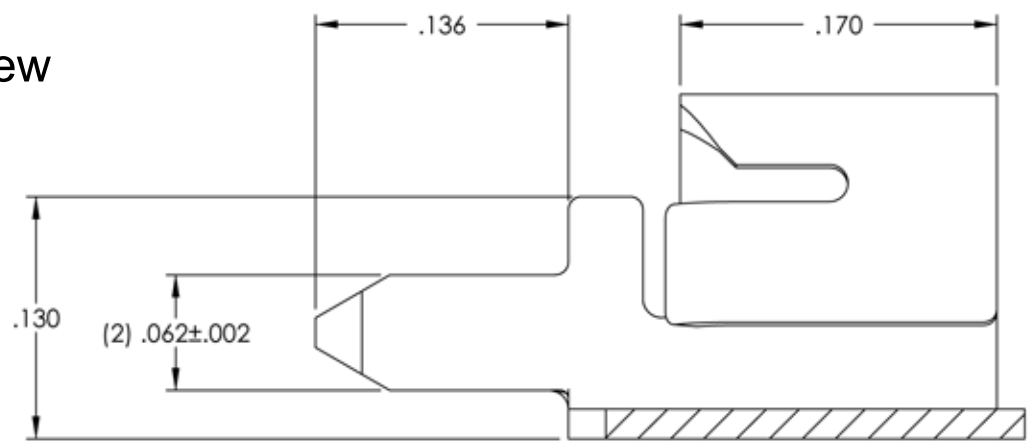
| Rev. | Description of Change/ SCN# | Date    |
|------|-----------------------------|---------|
| -    | INITIAL RELEASE ECR#572 SCJ | 3/14/11 |



# Printed Circuit Board Terminal Datasheets

The following PCB datasheets provide a sample view of the types of printed circuit board terminals that ETCO manufactures in the United States.

These terminals are available for shipment worldwide. ETCO engineers can also design custom printed circuit board terminals.



SECTION A-A  
SCALE 10 : 1

**For more information contact us:**

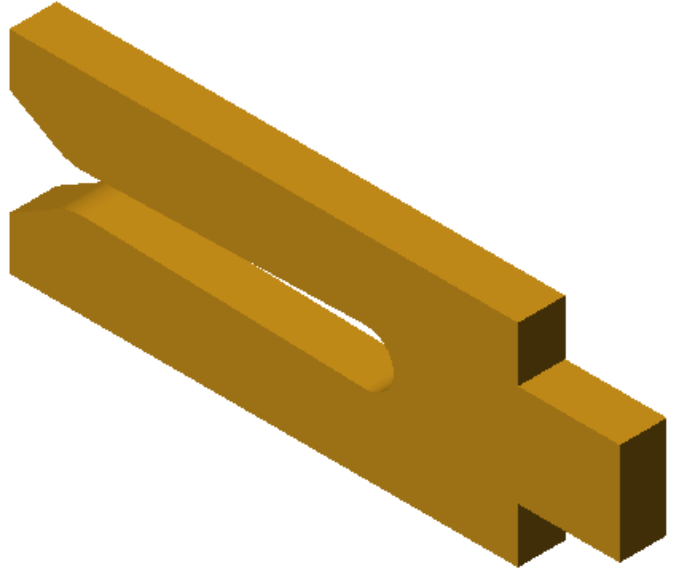
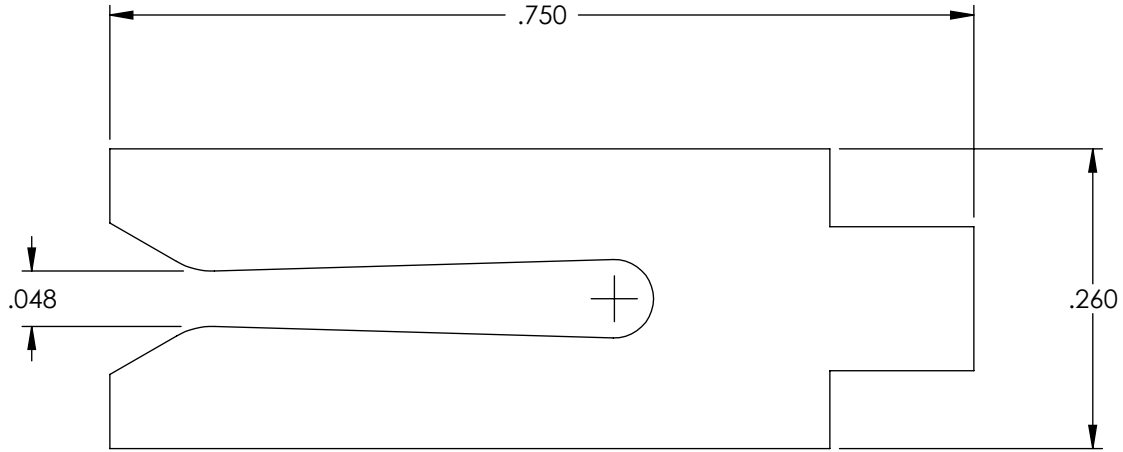
**e-mail:** [info@etco.com](mailto:info@etco.com)  
**USA & Canada:** 800-689-3826(ETCO)  
**International** +1 941-756-8426

**UNCONTROLLED COPY**

|  |  |  |  |        |  |
|--|--|--|--|--------|--|
|  |  |  | ETCO Incorporated<br>Engineered Products<br>25 Bellows Street<br>Warwick, RI 02888<br>Phone: (401) 467-2400<br>Fax: (401) 467-9230<br><a href="http://www.ETCO.com">www.ETCO.com</a> | Scale: |  |
|  |  |  |  | 10X    |  |

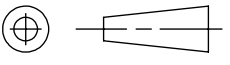

| PART CODE | DESCRIPTION | MATERIAL |
|-----------|-------------|----------|
| 09495     | CF1-HB      | NOTE 1   |

| Rev. | Description of Change/ SCN# | Date    |
|------|-----------------------------|---------|
| 1    | TRANSFER FROM CP TO EP      | 9-14-04 |



- NOTES:
1. MATERIAL: .058 THICK C26000 BRASS, 1/2 HARD, ANNEALED TO TEMPER, PER ETCO METAL CODE 01004.
  2. PARTS MAY BE COATED WITH A LIGHT FILM OF LUBRICATION USED IN THE MANUFACTURING PROCESS.

**UNCONTROLLED COPY**

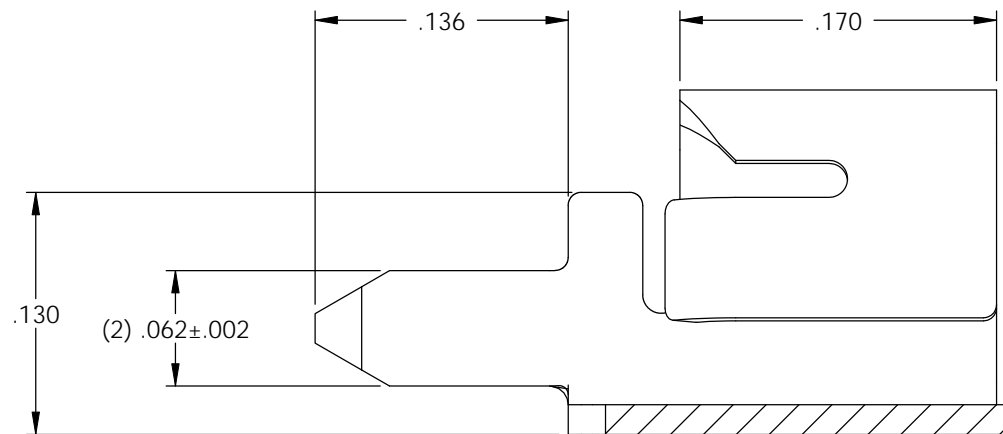
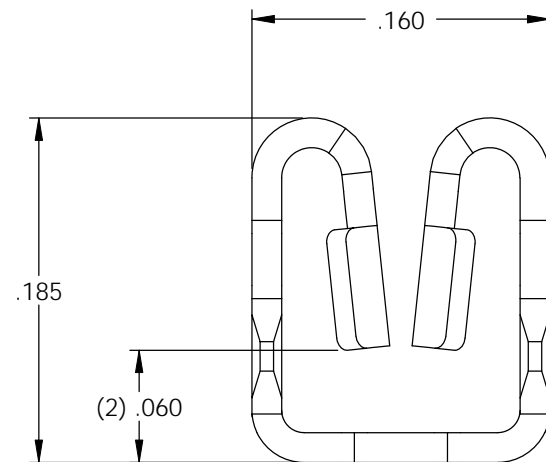
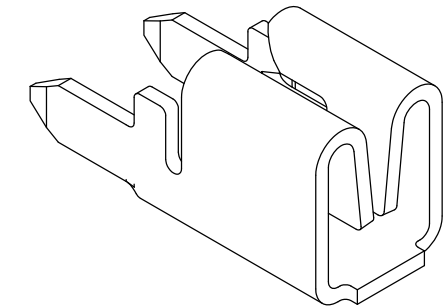
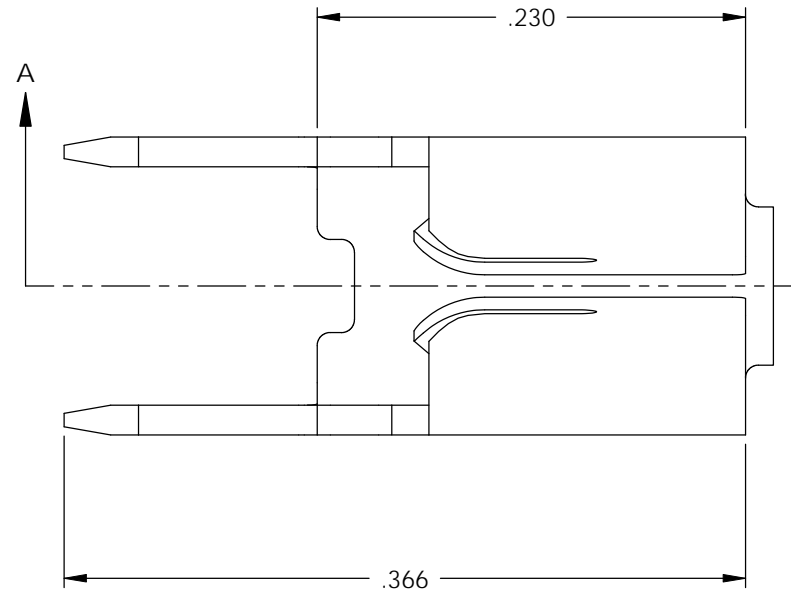
|  |  |  |                   |                                   |
|--|--|--|-------------------|-----------------------------------|
| <br>THIRD ANGLE PROJECTION                                    | TOOL NO.<br><b>0813</b>  | Title:<br><b>FEMALE CONTACT</b>  |                   |                                   |
|  | TOLERANCES UNLESS OTHERWISE SPECIFIED<br>INCHES: .XX - ±.030<br>.XXX - ±.015<br>ANGLES - ±5° | <br><b>ETCO</b> | DO NOT SCALE DWG. | Drawn By: <b>S.JOHNSON</b>        |
| ETCO Incorporated<br>Engineered Products<br>25 Bellows Street<br>Warwick, R.I. 02888<br>Phone: (401)467-2400<br>FAX: (401)467-9230<br>www.ETCO.com |  |  | Chk'd/App'd By:   | Scale: <b>6X</b><br>Size <b>B</b> |
|  |  | <b>CF1</b>   |                   |                                   |

NOTES:

- 1. MATERIAL: .016 THICK BRASS  
#4 TEMPER (FULL HARD)  
PER ETCO METAL CODE 05016.
- 2. POST PLATE: TIN OVER NICKEL.

| P/C   | DESCRIPTION     | POST-PLATED |
|-------|-----------------|-------------|
| 09622 | PCB-M062-HB-TAF | YES         |



| Rev. | Description of Change/ SCN# | Date    |
|------|-----------------------------|---------|
| -    | INITIAL RELEASE ECR#572 SCJ | 3/14/11 |



SECTION A-A  
SCALE 10 : 1

# UNCONTROLLED COPY

  
 PART PRODUCED IN  
 LOOSE PIECE FORM

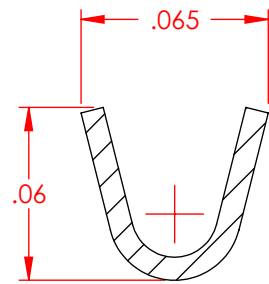
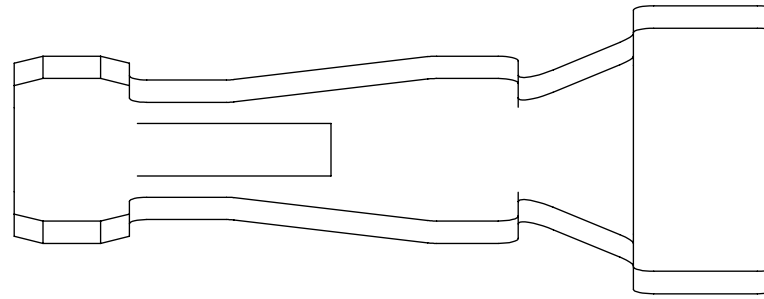
|  |   |  |                     |                |
|--|---|--|---------------------|----------------|
| <br>THIRD ANGLE PROJECTION<br>TOLERANCES UNLESS OTHERWISE SPECIFIED<br>INCHES: .XX - ±.030<br>.XXX - ±.015<br>ANGLES: ±5° | TOOL NO.<br><b>0765</b>   | Title: <b>BOTTOM &amp; SIDE ENTRY TERMINAL</b> |                     |                |
|  |  | DO NOT SCALE DWG.                              | Drawn By: S.JOHNSON | Date: 3/14/11  |
| ETCO Incorporated<br>Engineered Products<br>25 Bellows Street<br>Warwick, RI 02888<br>Phone: (401) 467-2400<br>Fax: (401) 467-9230<br>www.ETCO.com   |   | Chk'd/App'd By:                                | Scale: 10X          | Size: <b>B</b> |
| Dwg. No.: <b>PCB-M062-HB-TAF cust</b>  |   |  |                     |                |

**NOTE:**

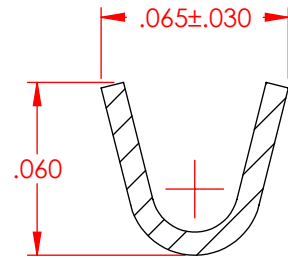
- 1.) MAT'L: .008 THK., BRASS,  
PRE-PLATE 100% TIN: .00150-.00275 THK. MATTE FINISH,  
OVER .000050 MIN. THK. NICKEL,  
#4 TEMPER (FULL HARD),  
PER ETCO METAL CODE NO. 04806.
- 2.) PARTS MAY BE COATED WITH A LIGHT FILM OF  
LUBRICATION USED IN THE MANUFACTURING  
PROCESS.
- 3.) TO MATE WITH A .062 THK. PC BOARD WITH A Ø .055  
THRU HOLE.
- 4.) WIRE RANGE: 26-22 AWG.
- 5.) INSUL RANGE: Ø .045-.060.

| P/C   | DESCRIPTION |
|-------|-------------|
| 09625 | PCB002-TNHB |

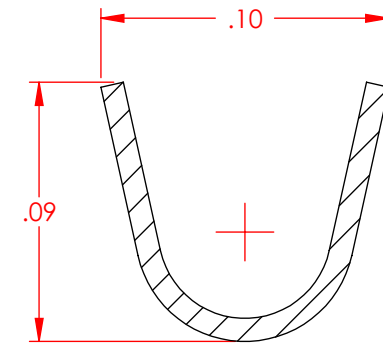
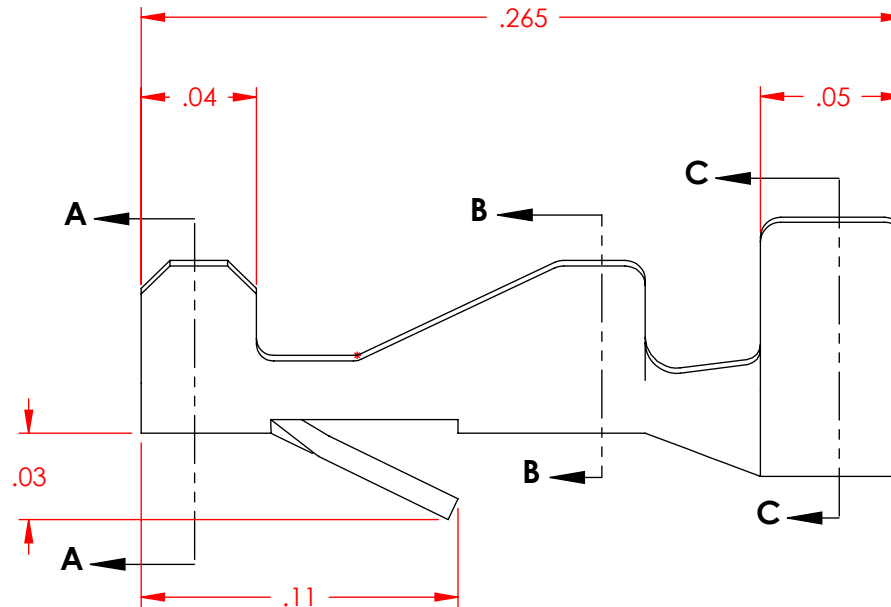
| Rev. | Description of Change/ SCN# | Date    |
|------|-----------------------------|---------|
| -    | SCN# 140037 SCJ             | 8-12-06 |
| 1    | SCN# 140175 SCJ             | 5-17-07 |
| 2    | SCN# 140181 SCJ             | 6-11-07 |



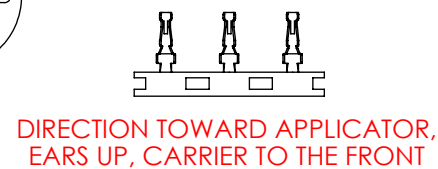
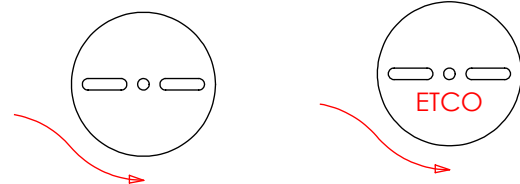
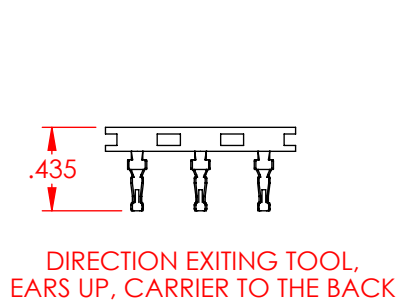
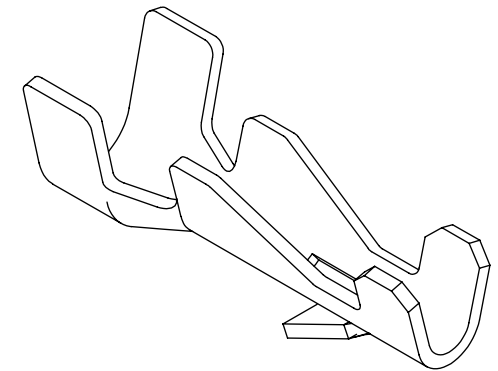
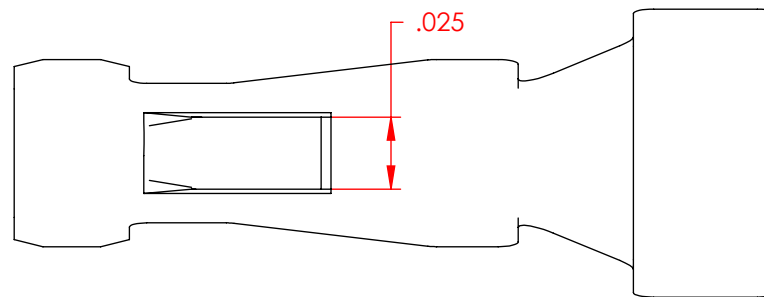
SECTION A-A  
SCALE 15:1



SECTION B-B  
SCALE 15:1



SECTION C-C  
SCALE 15:1

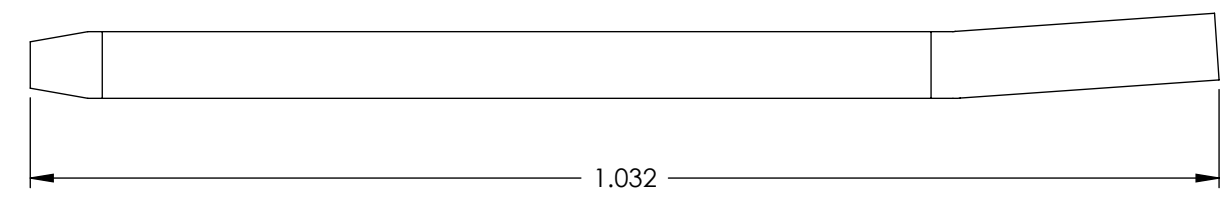
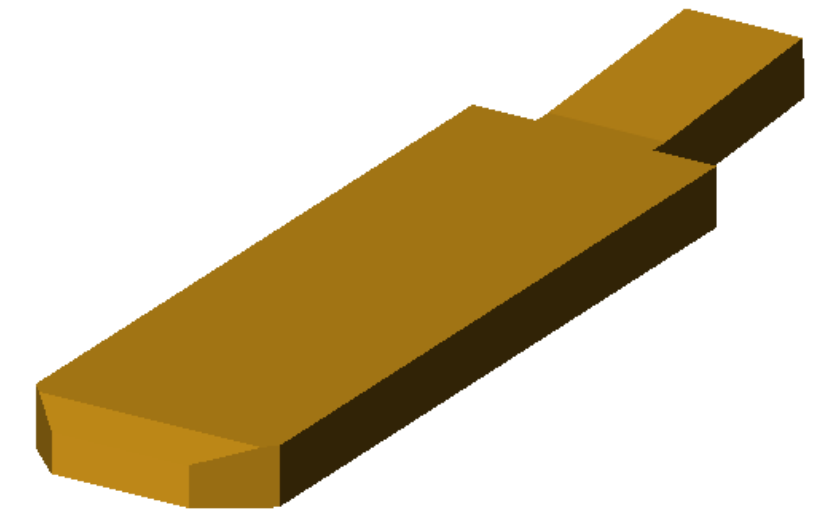
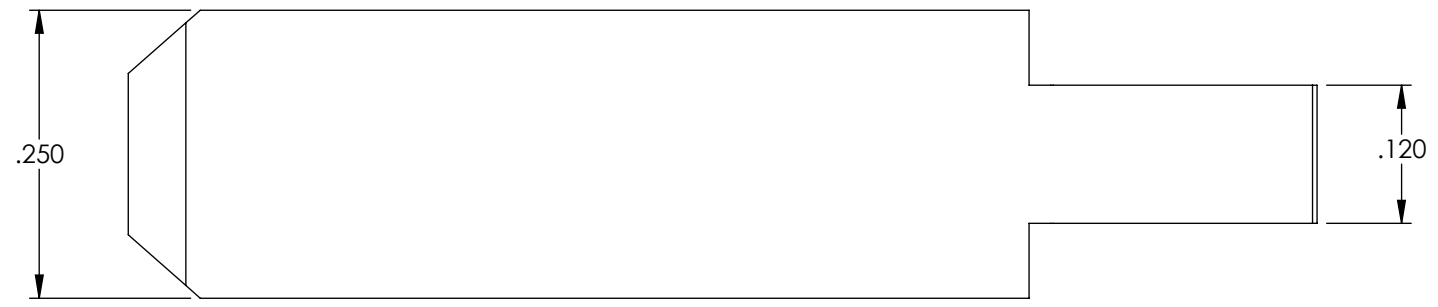


# UNCONTROLLED COPY

|   |                                 |   |                                   |                             |
|---|---------------------------------|---|-----------------------------------|-----------------------------|
| <p>THIRD ANGLE PROJECTION<br/>TOLERANCES UNLESS OTHERWISE SPECIFIED<br/>INCHES: .XX - ±.030<br/>.XXX - ±.015<br/>ANGLES: ±5°</p>                                | <p>TOOL NO.<br/><b>0216</b></p> | <p>Title: <b>PRINTED CIRCUIT BOARD TERMINAL</b></p> |                                   |                             |
|   |                                 | <p>DO NOT SCALE DWG.</p>                            | <p>Drawn By: <b>S.JOHNSON</b></p> | <p>Date: <b>8-12-06</b></p> |
| <p>ETCO Incorporated<br/>Engineered Products<br/>25 Bellows Street<br/>Warwick, RI 02888<br/>Phone: (401) 467-2400<br/>Fax: (401) 467-9230<br/>www.ETCO.com</p> |                                 | <p>Chk'd/App'd By:</p>                              | <p>Scale: <b>15X</b></p>          | <p>Size <b>B</b></p>        |
| <p>Dwg. No.: <b>PCB002-TNHB cust</b></p>  |                                 |   |                                   |                             |

| PART CODE | DESCRIPTION | MATERIAL |
|-----------|-------------|----------|
| 09895     | P1-HB       | NOTE 1   |

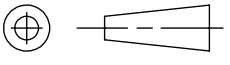

| Rev. | Description of Change/ SCN# | Date    |
|------|-----------------------------|---------|
| 1    | TRANSFER FROM CP TO EP      | 9-14-04 |



NOTES:

1. MATERIAL: .058 THICK C26000 BRASS, 1/2 HARD, ANNEALED TO TEMPER, PER ETCO METAL CODE 01008
2. PARTS MAY BE COATED WITH A LIGHT FILM OF LUBRICATION USED IN THE MANUFACTURING PROCESS.
3. ALL CORNERS SHOWN SHARP MAY HAVE A .010 RADIUS MAXIMUM.

## UNCONTROLLED COPY

|  |  |                     |                     |                            |
|--|--|---------------------|---------------------|----------------------------|
| <br>THIRD ANGLE PROJECTION                                    | TOOL NO. <b>0814</b>   |                     | Title: <b>BLADE</b> |                            |
|  | <br><b>ETCO</b> |                     | DO NOT SCALE DWG.   | Drawn By: <b>S.JOHNSON</b> |
| ETCO Incorporated<br>Engineered Products<br>25 Bellows Street<br>Warwick, R.I. 02888<br>Phone: (401)467-2400<br>FAX: (401)467-9230<br>www.ETCO.com |  |                     | Chk'd/App'd By:     | Scale: <b>6X</b>           |
| TOLERANCES UNLESS OTHERWISE SPECIFIED<br>INCHES: .XX - ±.030<br>.XXX - ±.015<br>ANGLES - ±5°   |  | Dwg. No.: <b>P1</b> |                     |                            |